

Feel free to print this for offline use if you so desire courtesy of www.iamnow.net

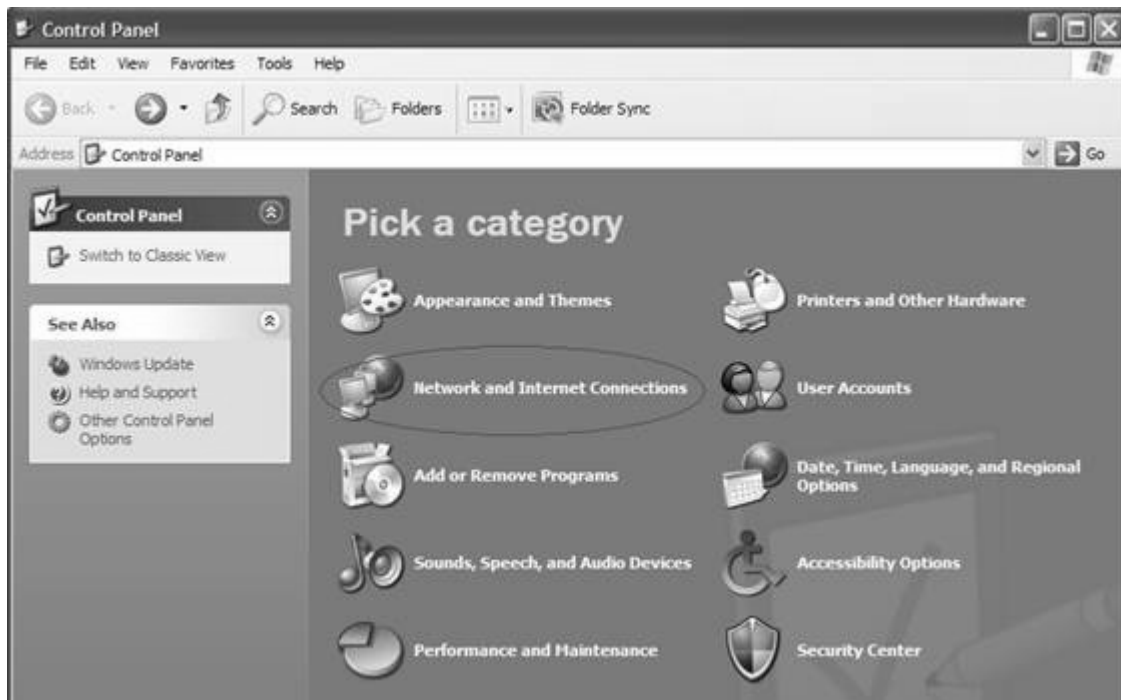
1. Go to Start then Control Panel



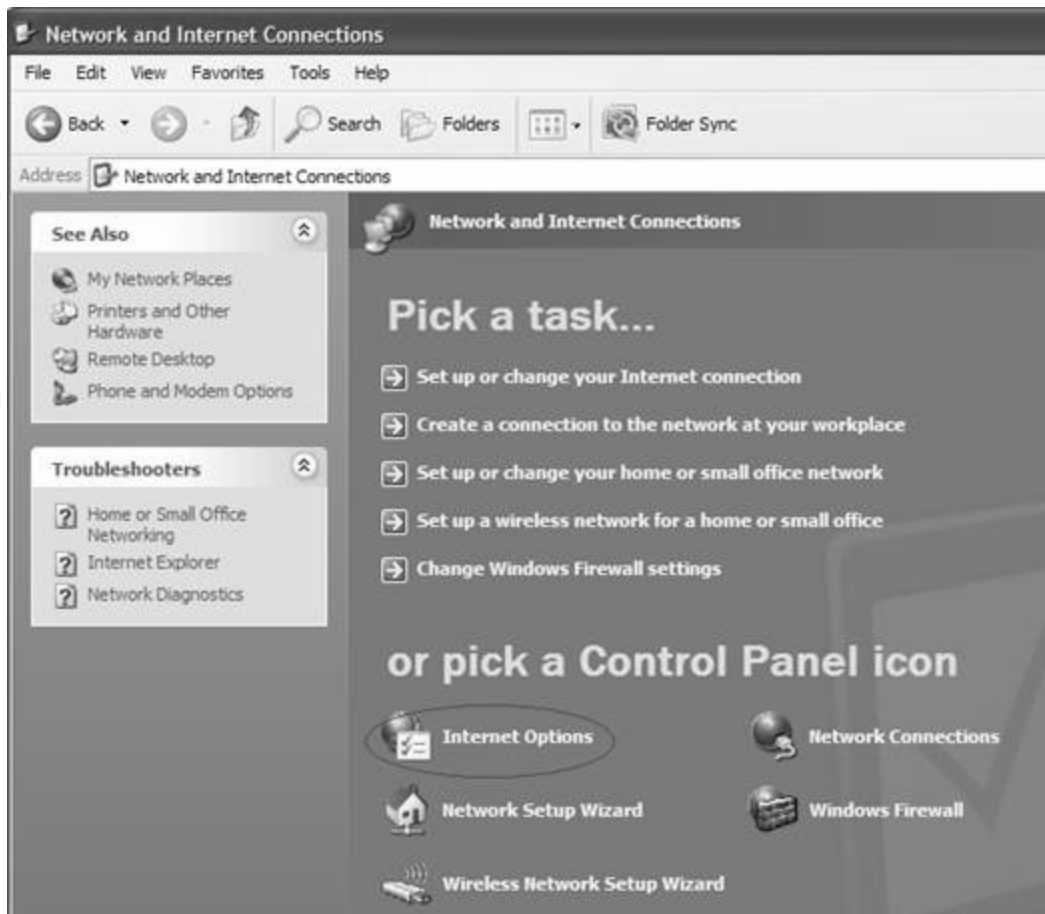
2. If your Control Panel is in Classic View with a white back ground double click on the Internet Options button.



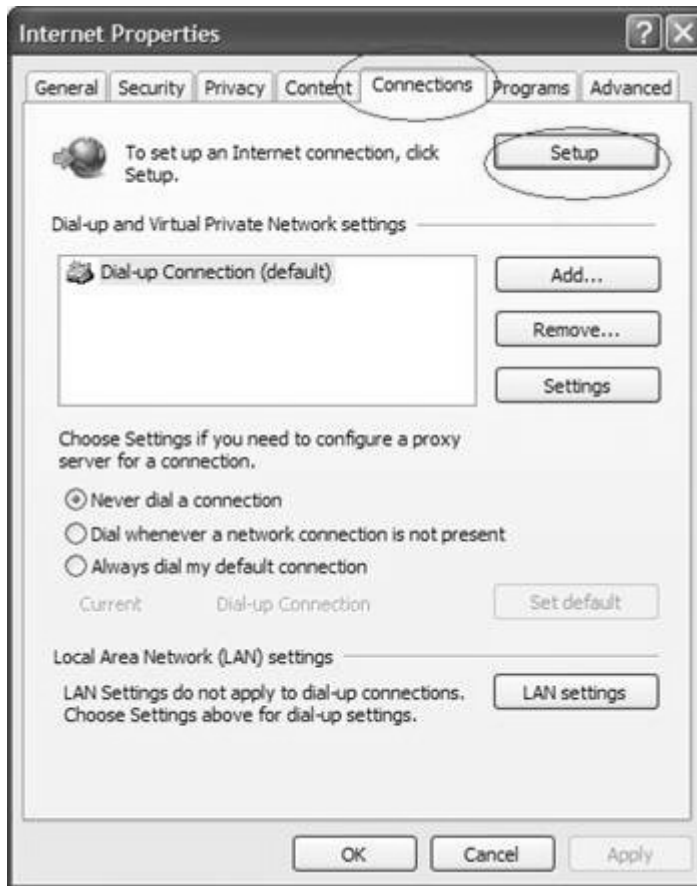
If your Control Panel is in Category View with a blue background go to Network and Internet Connections.



Then double click on Internet Options.



3. In the Internet Properties window click on the Connections tab. Once you have done that you will see the screen below and can click on the Setup button.



4. Click Next on the Welcome screen.



5. Leave the bullet in Connect to the Internet and click Next.



6. Put the bullet in Set up my connection manually and click Next.



7. Leave the bullet in Connect using a dial-up modem and click Next.



8. In the ISP Name box enter IAMNet and click Next.

New Connection Wizard

Connection Name
What is the name of the service that provides your Internet connection?

Type the name of your ISP in the following box.

ISP Name

The name you type here will be the name of the connection you are creating.

< Back Next > Cancel

9. In the Phone number box enter the local phone number you will dial to make your dial-up connection. Note: It is important to use a local dial-up number so that you are not charged for long distance calls. Because you are using a local number you will not need to enter a 1 or area code in this box. Nationwide local dial-up number can be found [here](#). Then click Next.

New Connection Wizard

Phone Number to Dial
What is your ISP's phone number?

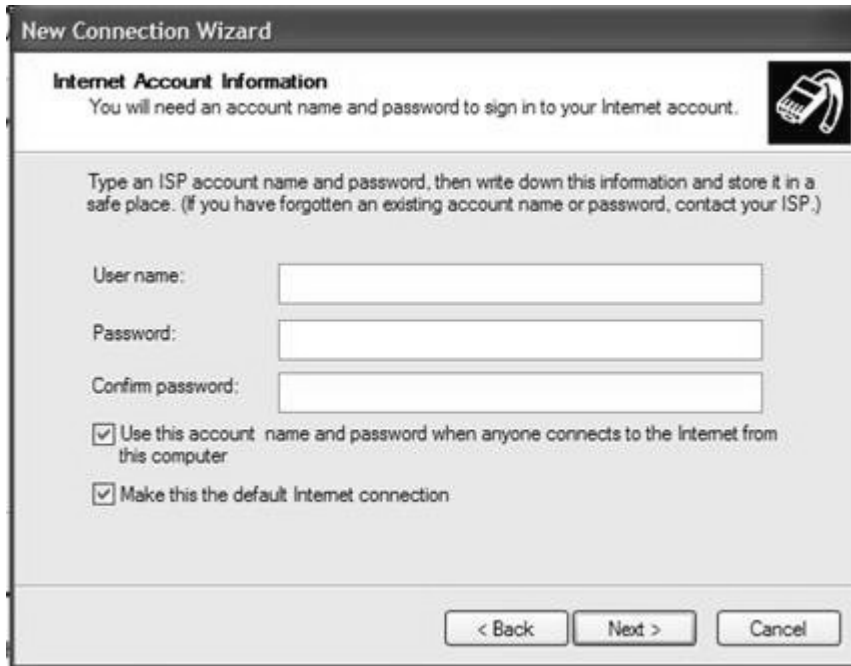
Type the phone number below.

Phone number:

You might need to include a "1" or the area code, or both. If you are not sure you need the extra numbers, dial the phone number on your telephone. If you hear a modem sound, the number dialed is correct.

< Back Next > Cancel

10. In the Username field enter your username@iamnow.net followed by your password in the next two boxes. Then click Next.



The screenshot shows the 'New Connection Wizard' window with the 'Internet Account Information' step. The window title is 'New Connection Wizard'. Below the title bar, there is a header 'Internet Account Information' with a sub-header 'You will need an account name and password to sign in to your Internet account.' and a small icon of a hand holding a phone. The main text reads: 'Type an ISP account name and password, then write down this information and store it in a safe place. (If you have forgotten an existing account name or password, contact your ISP.)' There are three input fields: 'User name:', 'Password:', and 'Confirm password:'. Below these fields are two checked checkboxes: 'Use this account name and password when anyone connects to the Internet from this computer' and 'Make this the default Internet connection'. At the bottom, there are three buttons: '< Back', 'Next >', and 'Cancel'.

11. Put a check in Add shortcut to this connection to my desktop if you would like then click Finish.



The screenshot shows the 'New Connection Wizard' window with the 'Completing the New Connection Wizard' step. The window title is 'New Connection Wizard'. On the left side, there is a large dark area with a small icon of a hand holding a phone. The main text reads: 'You have successfully completed the steps needed to create the following connection:'. Below this, there is a section titled 'IAMNet' with a bulleted list: 'Make this the default connection', 'Share with all users of this computer', and 'Use the same user name & password for everyone'. Below the list, it says: 'The connection will be saved in the Network Connections folder.' There is one unchecked checkbox: 'Add a shortcut to this connection to my desktop'. At the bottom, there is a line of text: 'To create the connection and close this wizard, click Finish.' and three buttons: '< Back', 'Finish', and 'Cancel'.

You can access your dial-up account from the shortcut you created or by going to:

Start, Control Panel, Network Connections (in Classic View) and double clicking on your dial-up account or in Category View by going to: Start, Control Panel, Network and Internet Connections, Network Connections and double clicking on your dial-up account.